

Proposed Strategies for EUR/USD Currency Trading
Results in USD as of Dec 31, 2009

Strategy X0	2003	2004	2005	2006	2007	2008	2009
Investment	\$5,000						
Avg Net Profit Rate / Year	74.89%						
Net Profit Rate / Year	114.12%	69.54%	33.63%	26.83%	14.69%	162.68%	102.75%
Equity @ end of year	\$10,682	\$8,472	\$6,666	\$6,326	\$5,731	\$13,124	\$10,116
Bottom Equity (chart)	\$4,999	\$4,844	\$4,823	\$4,502	\$4,598	\$4,178	\$4,665
Maximum Draw-down	16.45%						
	if start @	if start @	if start @	if start @	if start @	if start @	if start @
Worst Starts for Strategy	07/05/03	11/02/04	22/04/05	22/09/06	17/08/07	23/01/08	18/05/09
Equity @ end of year	\$8,166	\$8,026	\$4,608	\$5,646	\$4,661	\$12,244	\$5,646
Worst Bottom Equity (chart)	\$3,910	\$4,398	\$4,087	\$4,785	\$4,026	\$3,298	\$3,529
Worst Max Draw-down	34.04%						

Strategy X0-Safe	2003	2004	2005	2006	2007	2008	2009
Investment	\$5,000						
Avg Net Profit Rate / Year	60.08%						
Net Profit Rate / Year	101.01%	62.62%	26.92%	23.03%	13.08%	120.23%	73.70%
Equity @ end of year	\$10,029	\$8,127	\$6,334	\$6,138	\$5,651	\$11,004	\$8,670
Bottom Equity (chart)	\$4,999	\$4,979	\$4,640	\$4,502	\$4,598	\$4,576	\$4,665
Maximum Draw-down	9.96%						
	if start @	if start @	if start @	if start @	if start @	if start @	if start @
Worst Starts for Strategy	07/05/03	11/02/04	22/04/05	22/09/06	17/08/07	23/01/08	18/05/09
Equity @ end of year	\$7,769	\$7,821	\$4,585	\$5,702	\$4,581	\$10,256	\$4,712
Worst Bottom Equity (chart)	\$4,039	\$4,673	\$4,249	\$4,785	\$3,943	\$3,872	\$3,794
Worst Max Draw-down	24.12%						

Strategy X0-Wise	2003	2004	2005	2006	2007	2008	2009
Investment	\$5,000						
Avg Net Profit Rate / Year	63.81%						
Net Profit Rate / Year	102.56%	65.65%	28.28%	23.03%	13.08%	123.69%	90.37%
Equity @ end of year	\$10,107	\$8,278	\$6,401	\$6,138	\$5,651	\$11,177	\$9,500
Bottom Equity (chart)	\$4,999	\$4,901	\$4,640	\$4,502	\$4,598	\$4,576	\$4,665
Maximum Draw-down	9.96%						
	if start @	if start @	if start @	if start @	if start @	if start @	if start @
Worst Starts for Strategy	07/05/03	11/02/04	22/04/05	22/09/06	17/08/07	10/12/08	18/05/09
Equity @ end of year	\$7,846	\$7,973	\$4,652	\$5,702	\$4,581	\$5,508	\$4,966
Worst Bottom Equity (chart)	\$4,039	\$4,596	\$4,280	\$4,785	\$3,943	\$3,522	\$3,979
Worst Max Draw-down	29.56%						

€/ \$ Price	Low	1.0333	1.1758	1.1640	1.1825	1.2864	1.2328	1.2455
	High	1.2646	1.3669	1.3582	1.3370	1.4970	1.6039	1.5146

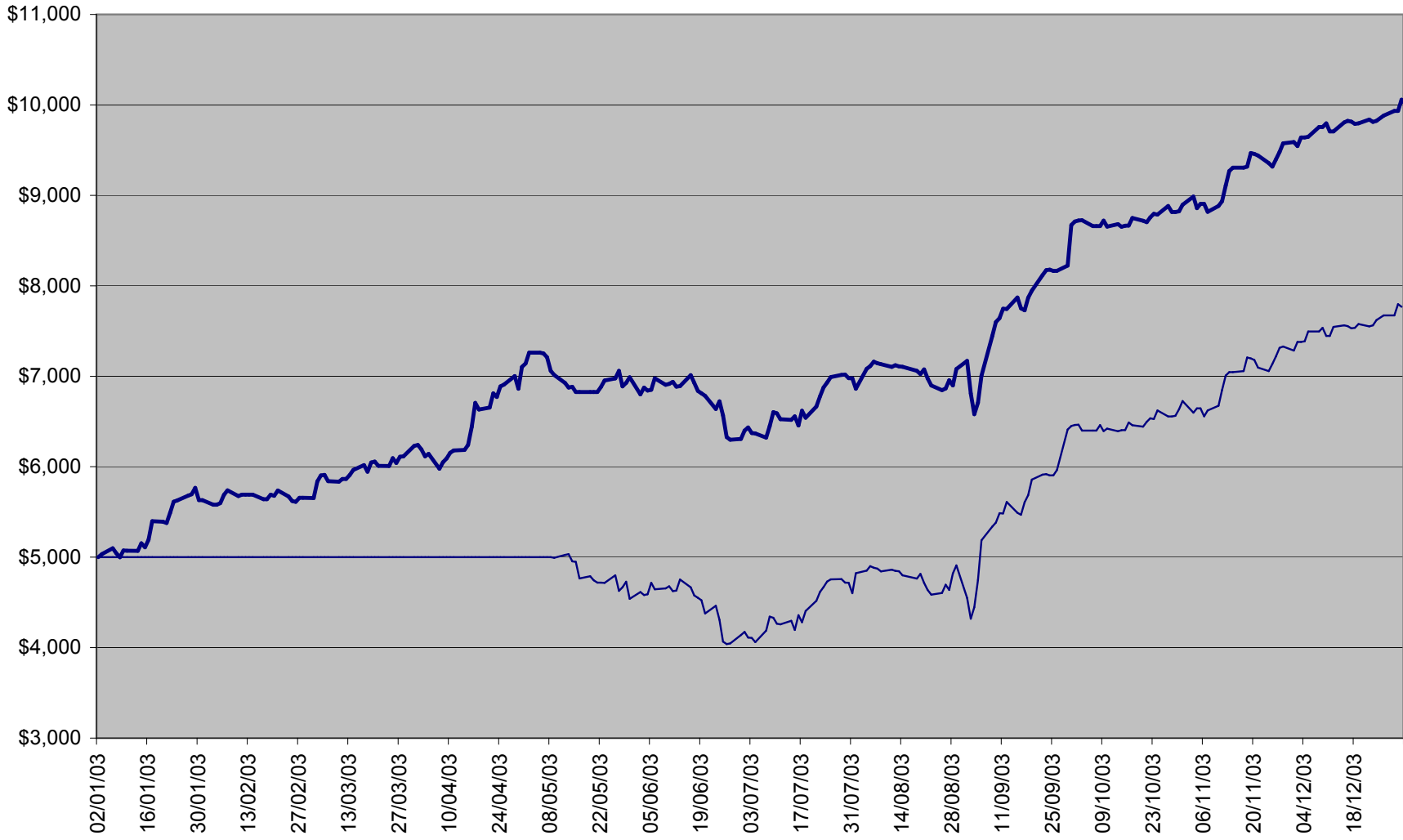
Notes

- 1- The proposed strategies are purely based on mathematical algorithms regardless of economic or financial news
- 2- I recommend Strategy X0-Safe, although all the proposed strategies are low risk and highly profitable
- 3- The Yearly Net Profit Rate of X0-Safe varied from 13.08% (2007) up to 120.23% (2008) of the investment
- 4- The Average Net Profit Rate of X0-Safe is 60.08% of the investment per year (based on algorithm results)
- 5- The Investor is not required to increase his initial investment (here it's \$5000 for the whole period of trading)
- 6- The Investor should retrieve the Net Profit at the end of each year (e.g. \$5029 @ end of 2003 in case of X0-Safe)
- 7- The Investor can select any date to start trading, although it is better to start at 01/01/200X
- 8- The Investor can stop trading and retrieve his equity at any time of year including any Profit/Loss (see charts)
- 9- The Investor should pay me 25% of the Yearly Net Profit at the end of each year, including strategy execution fees
- 10- The Investor shall assume alone any loss although it's unlikely to happen
- 11- The Investor can invest N x \$5000, to expect his yearly net profit be multiplied by N
- 12- The details of the strategies will not be communicated to the Investor under any circumstances

EQUITY 2003

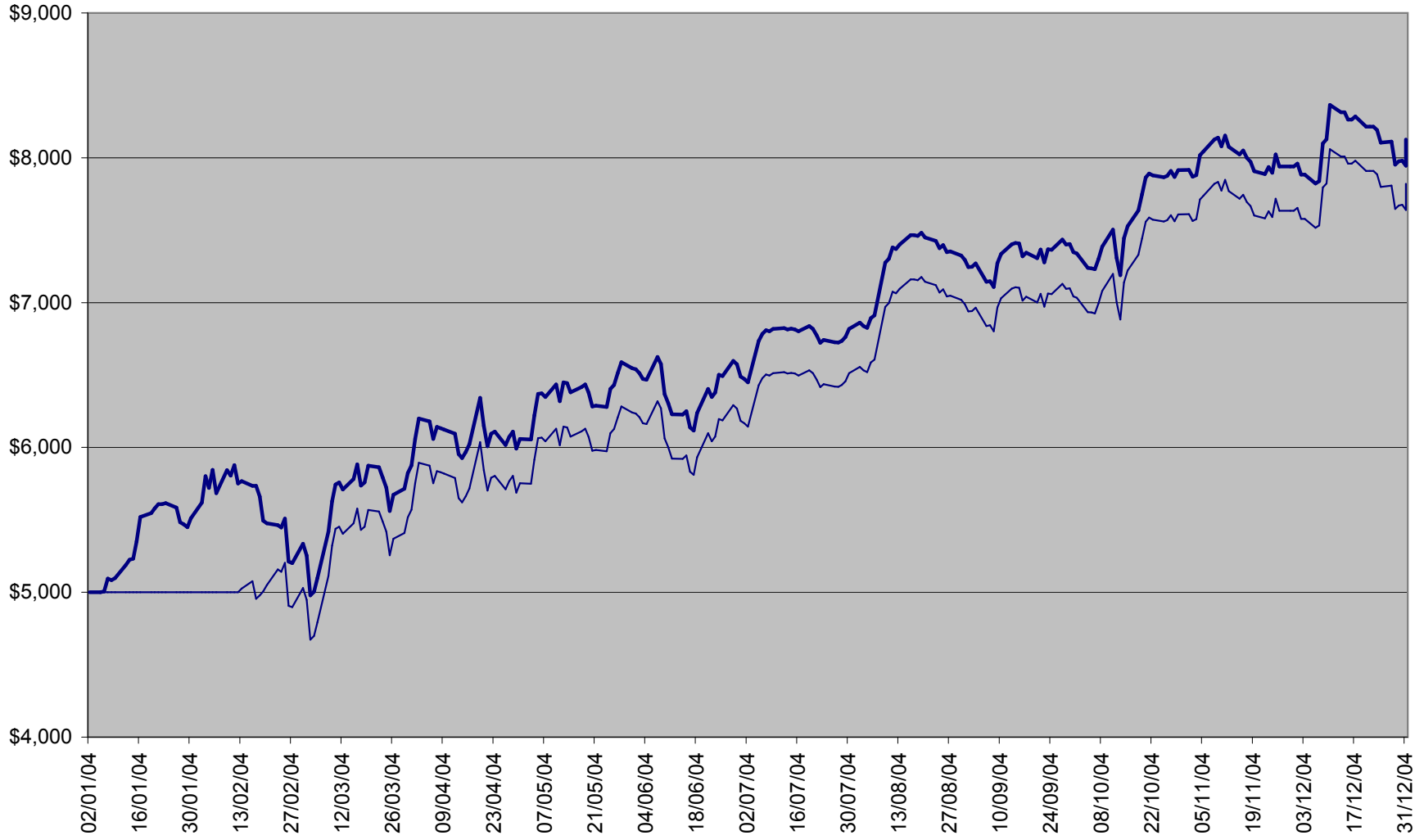
— X0-Safe Year Start

— X0-Safe Worst Start



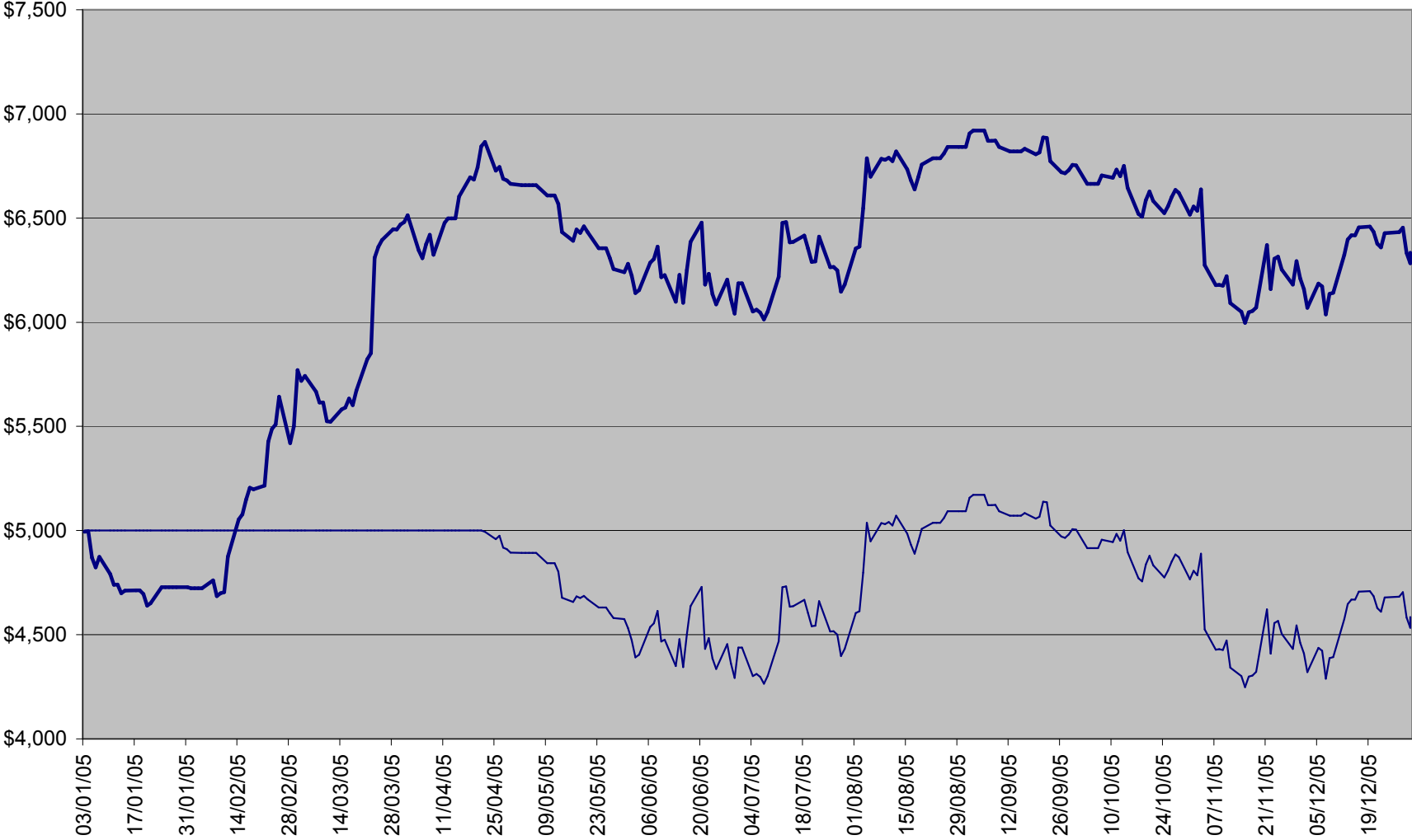
EQUITY 2004

— X0-Safe Year Start — X0-Safe Worst Start



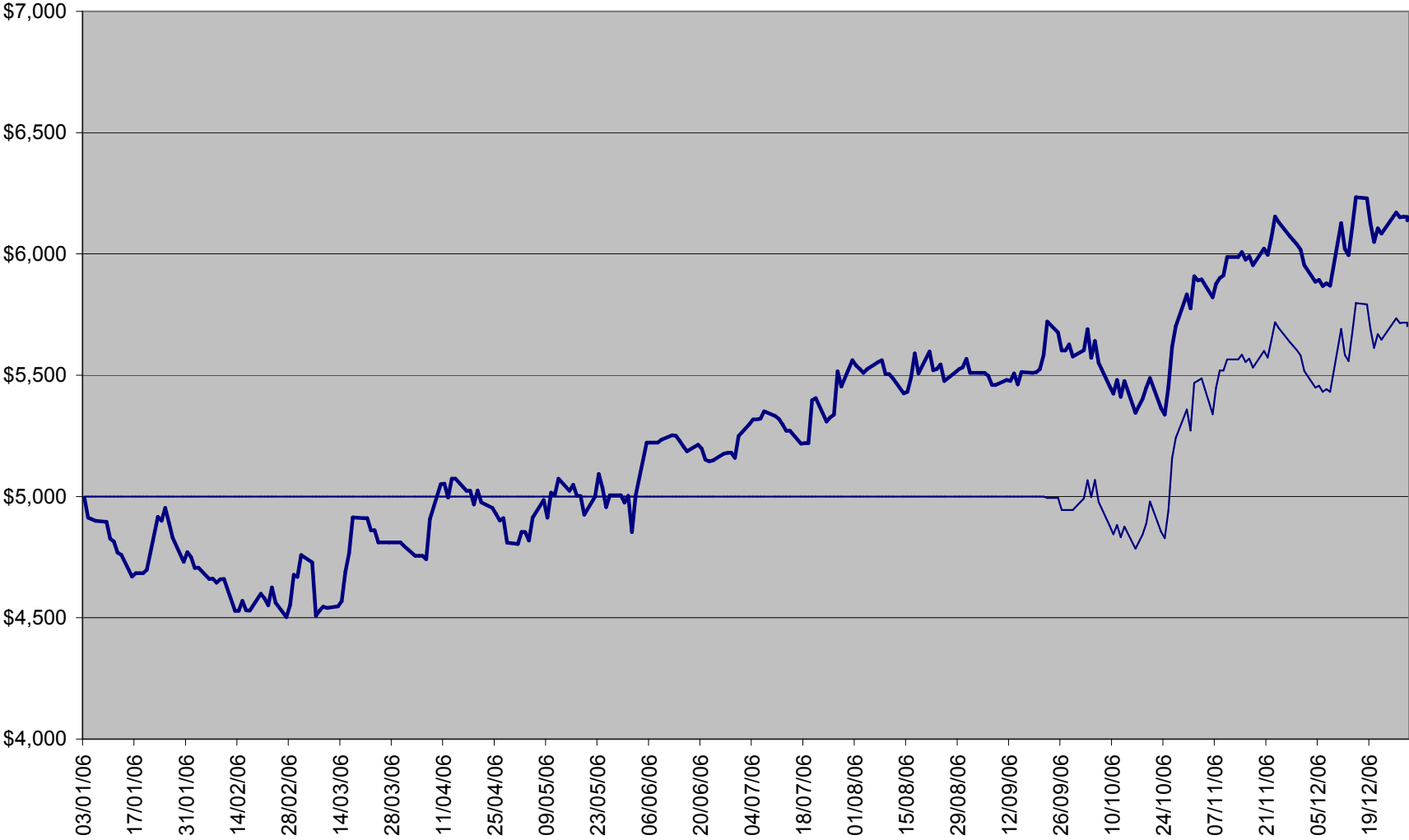
EQUITY 2005

— X0-Safe Year Start — X0-Safe Worst Start



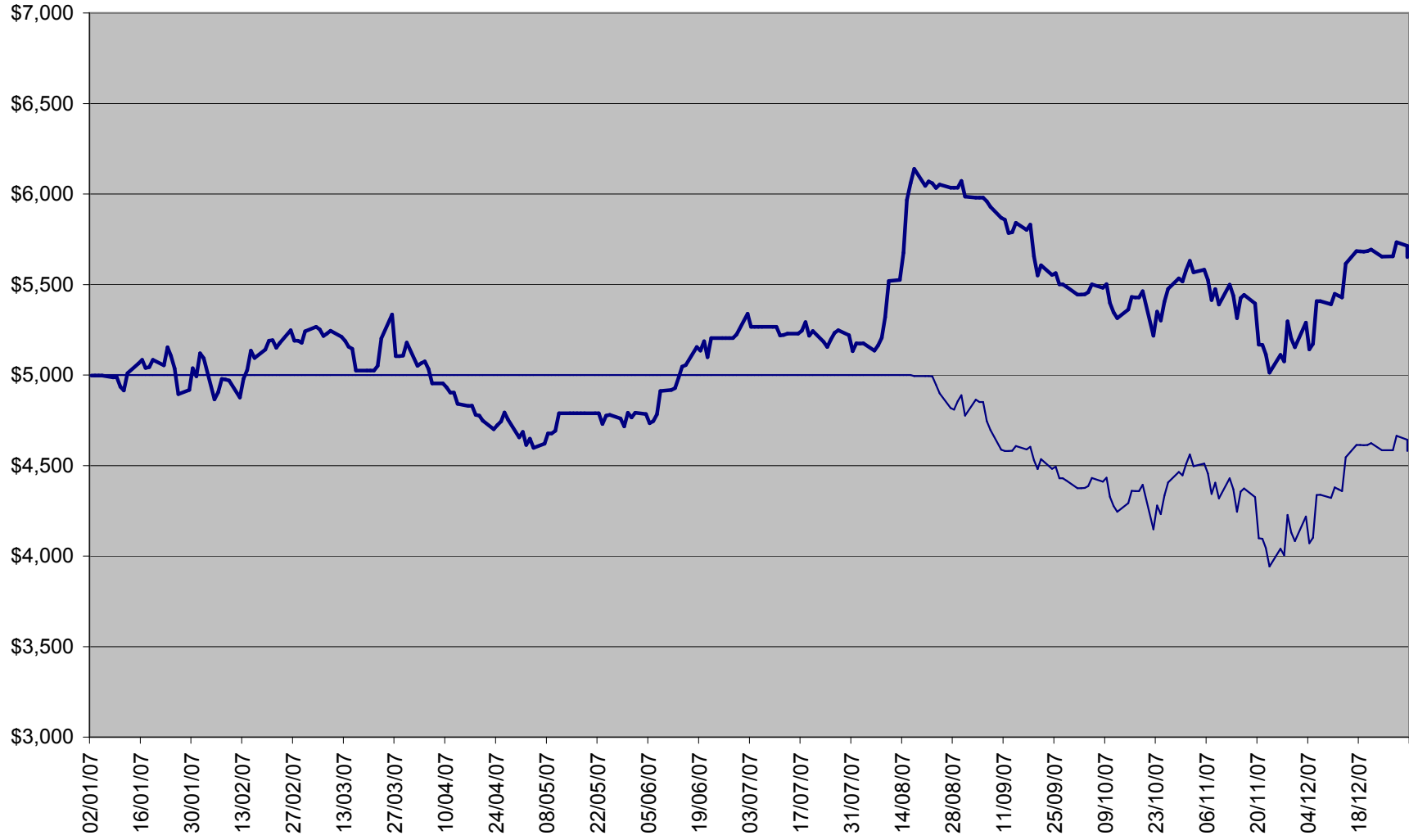
EQUITY 2006

X0-Safe Year Start X0-Safe Worst Start



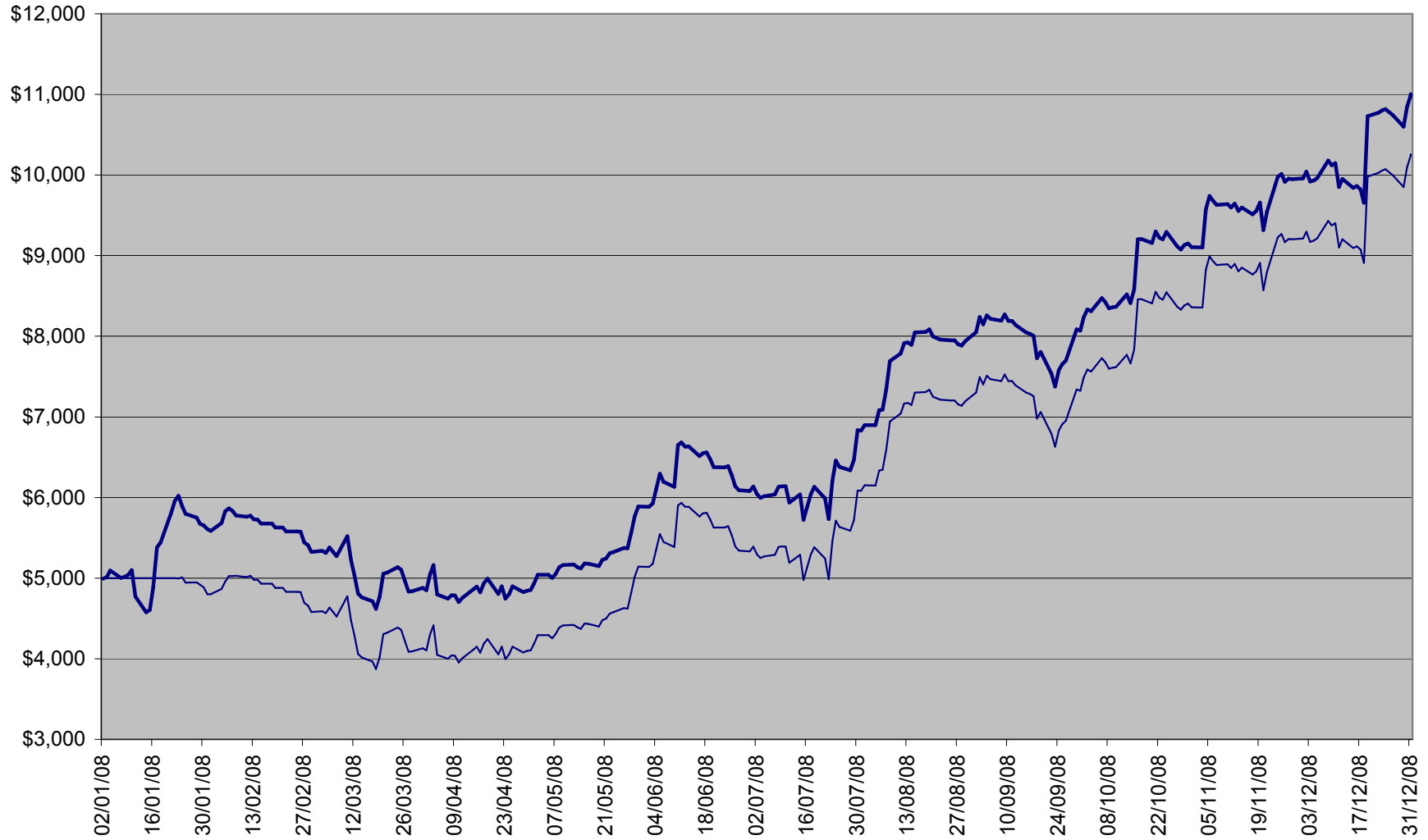
EQUITY 2007

— X0-Safe Year Start — X0-Safe Worst Start



EQUITY 2008

— X0-Safe Year Start — X0-Safe Worst Start



EQUITY 2009

— X0-Safe Year Start — X0-Safe Worst Start

